

Apparel Limited Inc.  
Exclusive Licensee for:



# PQ924L

Description: S/S 2 Button Polo Shirt

Fabrication: Stretch Pique

Rise:

Fit: Slim

Size: S-XL



# JR936

Description: S/S 5 Button Jersey Polo

Fabrication: Stretch Jersey

Rise:

Fit: Slim

Size: S-XL



# PQ924L

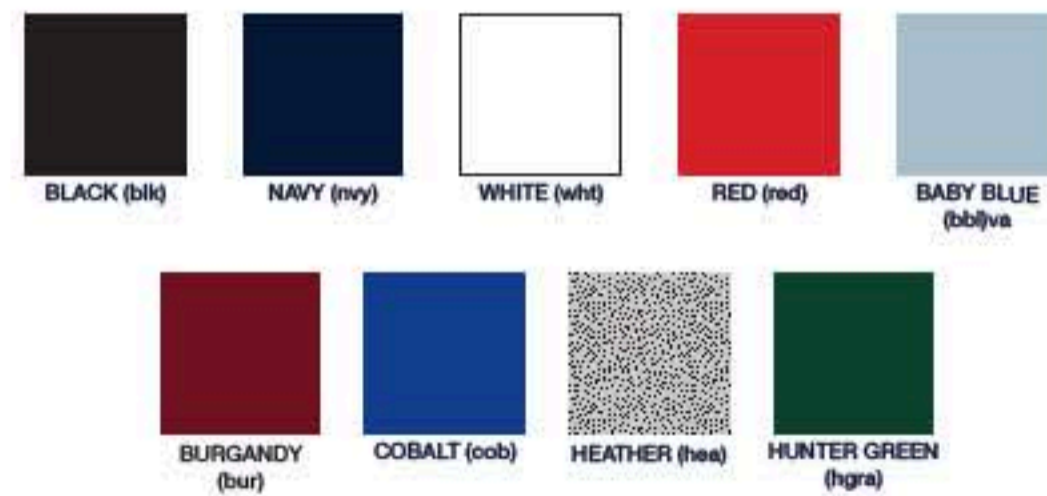
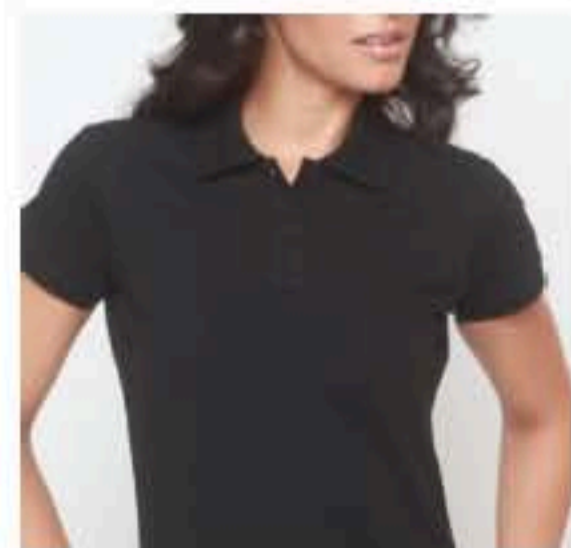
Description: Plus Size S/S 2 Button Polo Shirt

Fabrication: Stretch Pique

Rise:

Fit: Slim

Size: 1X-4X



# JR830

Description: Jersey Tee

Fabrication: Cotton Jersey

Rise:

Fit: Slim

Size: S-XL



# JR831

Description: Crew Neck Tee

Fabrication: Cotton Jersey

Rise:

Fit: Slim

Size: S-XL



# SF513

Description:

Fabrication:

Rise:

Fit:

Size:

Zip Hoodie Jacket

Stretch French Terry

Slim

S-XL



BLACK (blk)



NAVY (navy)



SILVER (sil)



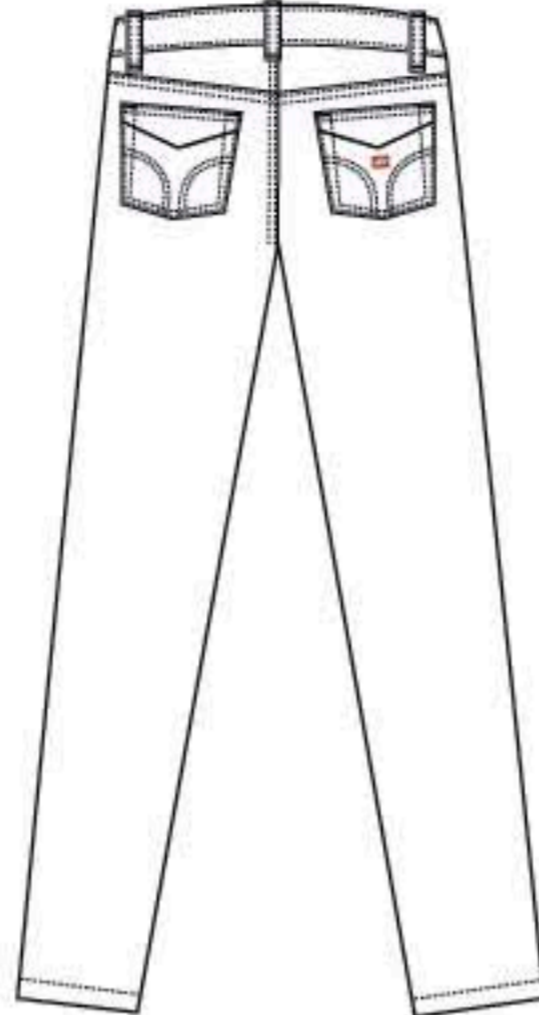
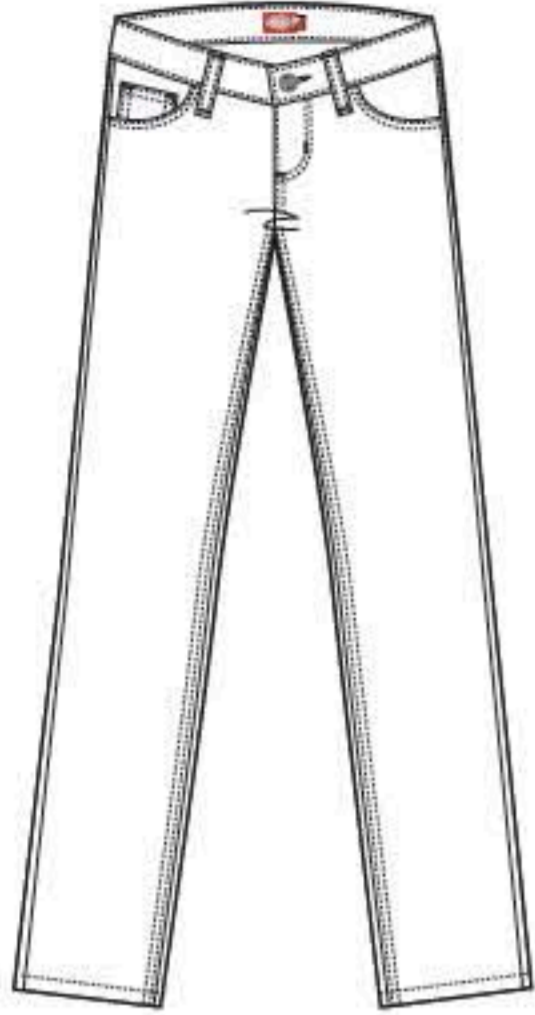
WHITE (wht)



RED (red)



# Classic 5 Pocket



## HH164

Description: Classic 5 Pkt. Skinny  
 Fabrication: **Stretch Twill**  
 Rise: Lowrise  
 Fit: **Slim**  
 Size: 0-15



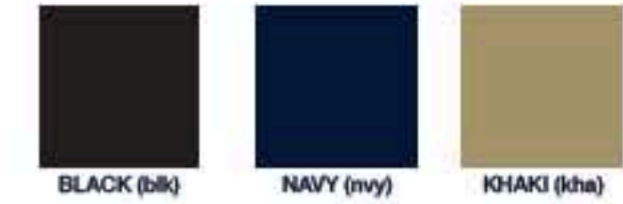
## 164JST

Description: Classic 5 Pkt. Skinny  
 Fabrication: **Stretch Sateen**  
 Rise: Lowrise  
 Fit: **Slim**  
 Size: 0-15



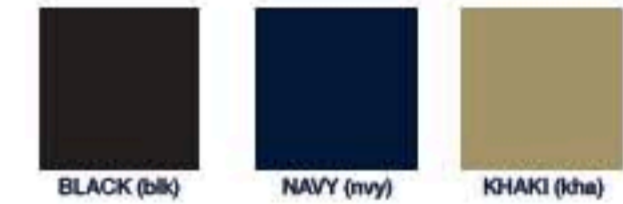
## 164JCDSK

Description: Classic 5 Pkt. Skinny  
 Fabrication: **Stretch Corduroy**  
 Rise: Lowrise  
 Fit: **Slim**  
 Size: 0-15



## 164PNT

Description: Mock 5 Pkt. Skinny  
 Fabrication: **Stretch Ponte**  
 Rise: Lowrise  
 Fit: **Slim**  
 Size: 0-15



## HH166

Description: Classic 5 Pkt. Straight  
 Fabrication: **Stretch Twill**  
 Rise: Lowrise  
 Fit: **Slim**  
 Size: 0-15



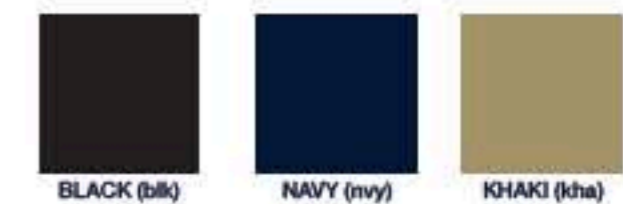
## HH014CV

Description: Curvey 5 Pkt. Skinny Pant  
 Fabrication: **Stretch Twill**  
 Rise: Midrise  
 Fit: **Slim**  
 Size: 0-15



## HH164GL

Description: Plus Size 5 Pkt. Skinny Pant  
 Fabrication: **Stretch Twill**  
 Rise: Midrise  
 Fit: **Slim**  
 Size: 0-15



# The Worker



## N882

Description: "The Worker" Bootcut Pant  
Fabrication: **Stretch Twill**  
Rise: Midrise  
Fit: Slim  
Size: 0-17



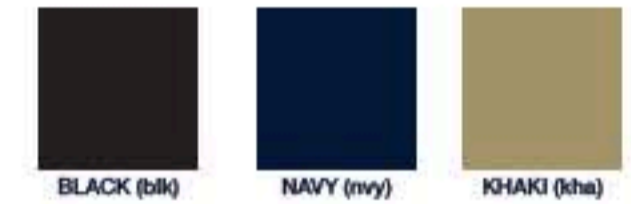
## 882JPRBT

Description: The Worker 2 Pkt. Bootcut  
Fabrication: **Poly Rayon**  
Rise: Midrise  
Fit: Slim  
Size: 0-15



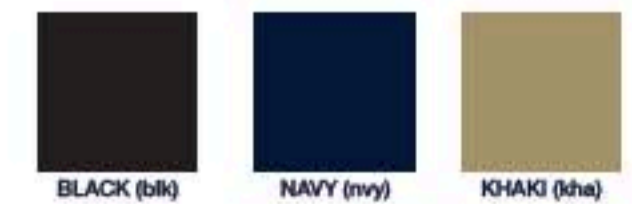
## HH013CV

Description: Curvey 2 Pkt. Bootcut Pant  
Fabrication: **Stretch Twill**  
Rise: Midrise  
Fit: Slim  
Size: 0-15



## N882GL

Description: Plus Size 2 Pkt. Bootcut Pant  
Fabrication: **Stretch Twill**  
Rise: Midrise  
Fit: Slim  
Size: 16-22



# HH874SK

Description: Original 4 Pkt. Skinny Pant  
Fabrication: **Stretch Twill**  
Rise: Midrise  
Fit: Skinny  
Size: 0-15



# The Original Lowrider

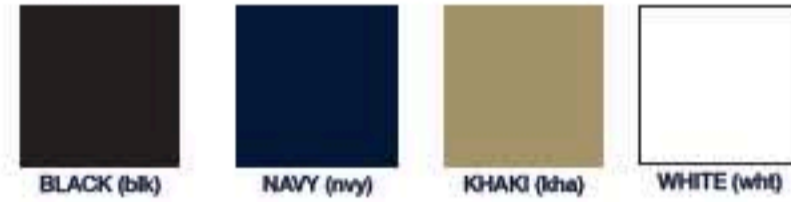
# 874JCDSK

Description: 4 Pkt. Skinny Pant  
Fabrication: **Stretch Corduroy**  
Rise: Midrise  
Fit: Slim  
Size: 0-15



# HH874ST

Description: 4 Pkt. Straight Leg Pant  
Fabrication: **Stretch Twill**  
Rise: Midrise  
Fit: Slim  
Size: 0-15



# HH874STCV

Description: Curvey 4 Pkt. Straight Leg  
Fabrication: **Stretch Twill**  
Rise: Midrise  
Fit: Slim  
Size: 0-15



# HH874STGL

Description: Plus Size 4 Pkt. Straight Leg  
Fabrication: **Stretch Twill**  
Rise: Midrise  
Fit: Slim  
Size: 16-22





## NHH1011

Description: Bull 4 Pkt. Pant Bootcut Pant

Fabrication: Stretch Twill

Rise: Midrise

Fit: Slim

Size: 0-15



## HH201

Description: College Pant Bootleg

Fabrication: Stretch Twill

Rise: Highrise

Fit: Slim

Size: 0-15



## TR1011

Description: Broker 4 Pkt. Pant

Fabrication: Poly Rayon

Rise: Midrise

Fit: Bootleg

Size: 0-15



## HH201GL

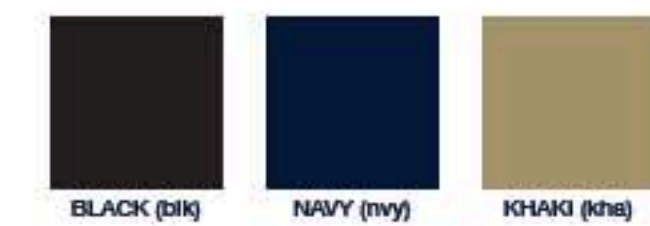
Description: Plus Size College Pant Bootleg

Fabrication: Stretch Twill

Rise: Highrise

Fit: Slim

Size: 16-22



# 1HH

Description: Simple No Pkt. Pant  
Fabrication: **Stretch Corduroy**  
Rise: Lowrise  
Fit: Skinny  
Size: 0-15



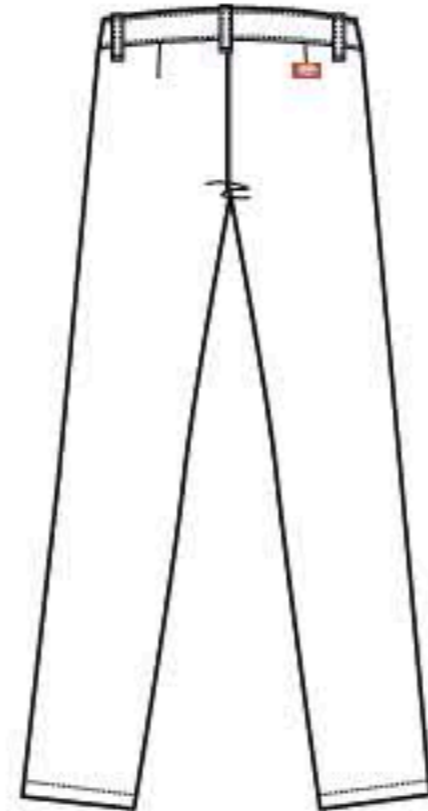
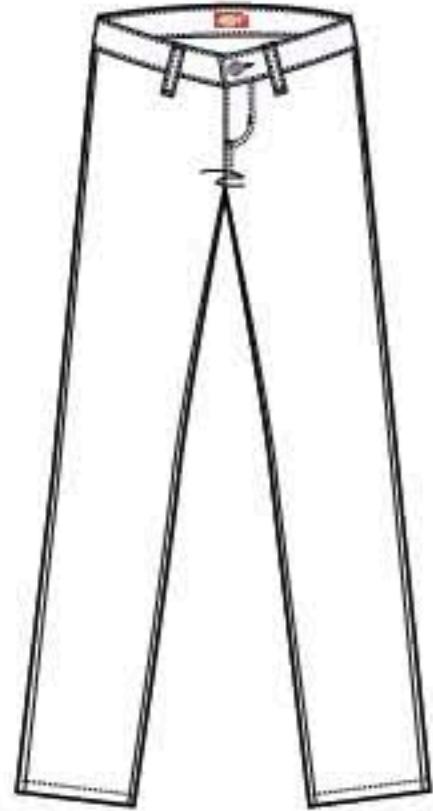
BLACK (blk)



NAVY (nvy)



KHAKI (kha)

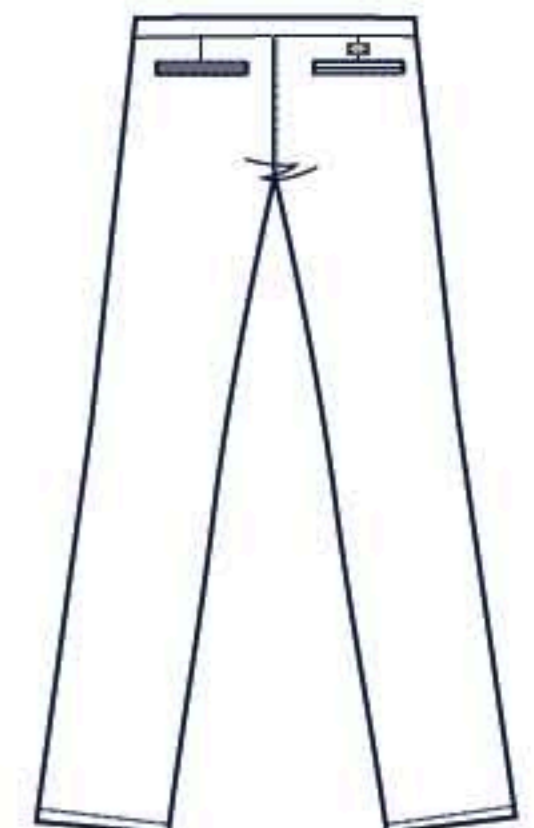
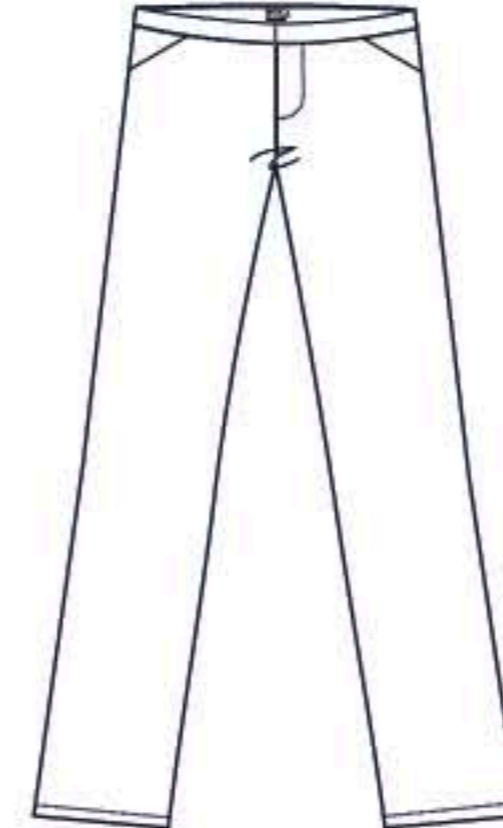


# TR1431

Description: Agent 4 Pkt. Straight Leg Pant  
Fabrication: **Poly Rayon**  
Rise: Midrise  
Fit: Slim  
Size: 0-15



BLACK (blk)



# 1523JHHST

Description: 30" Inseam Straight Leg Pant  
Fabrication: **Stretch Twill**  
Rise: Midrise  
Fit: Relaxed  
Size: 0-15



BLACK (blk)

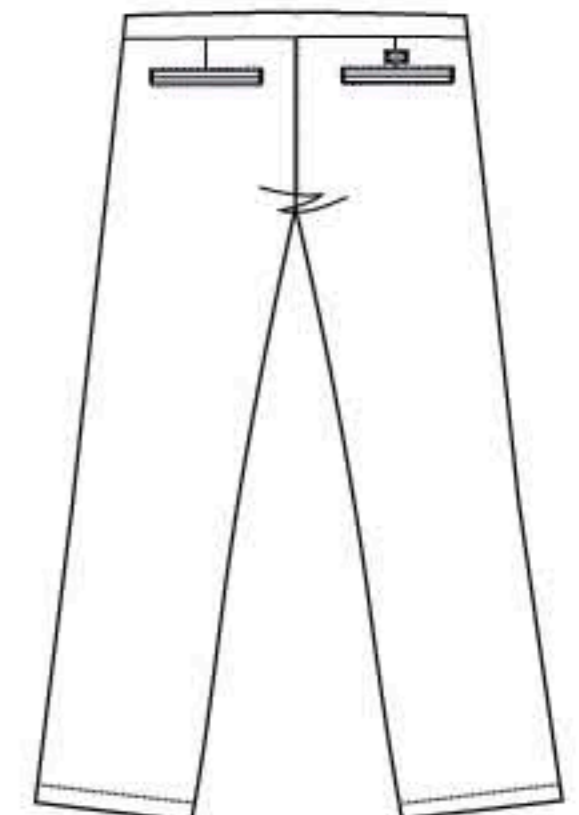
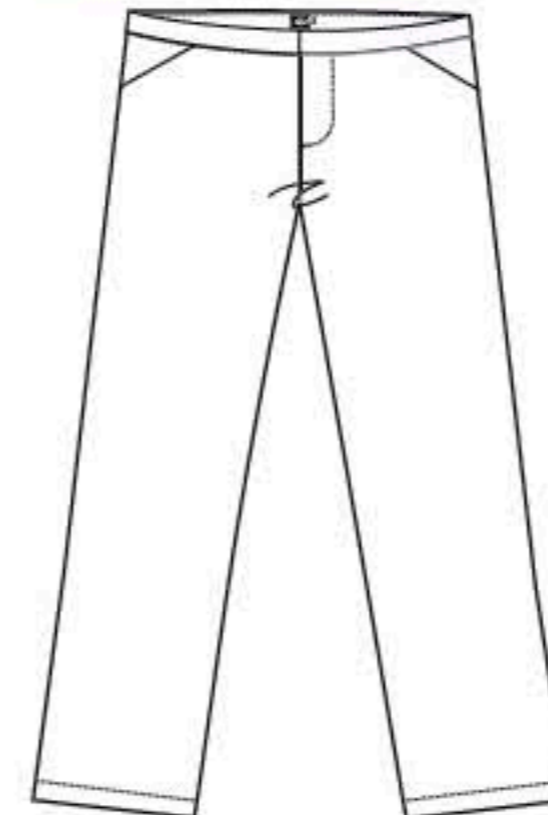


# TR1432

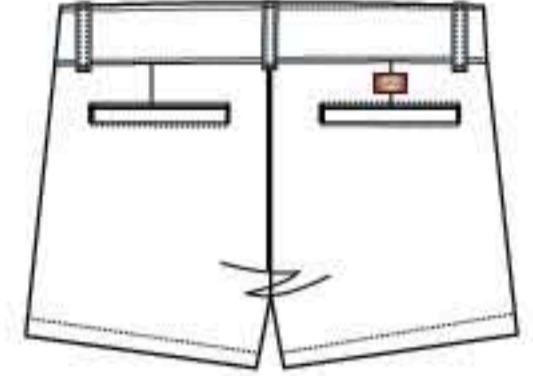
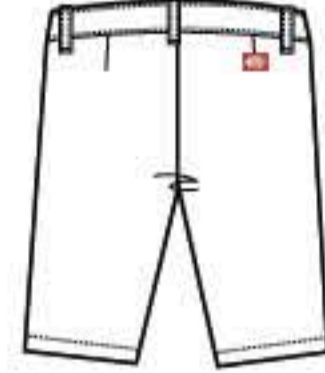
Description: Agent 5 Pkt Straight Leg Crop Pant  
Fabrication: **Poly Rayon**  
Rise: Midrise  
Fit: Slim  
Size: 0-15



BLACK (blk)







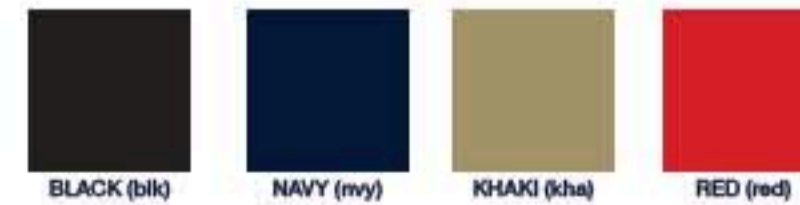
## HH876

Description: 13" 4 Pkt. Shorts  
Fabrication: Stretch Twill  
Rise: Midrise  
Fit: Slim  
Size: 0-15



## NHH6016

Description: 5" 4 Pkt. Short  
Fabrication: Stretch Twill  
Rise: Midrise  
Fit: Slim  
Size: 0-15



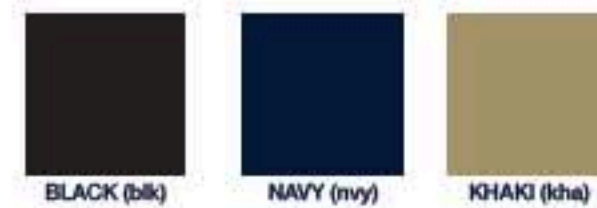
## NHH6012

Description: 8" 4 Pkt. Shorts  
Fabrication: Stretch Twill  
Rise: Midrise  
Fit: Skinny  
Size: 0-15



## HH876GL

Description: Plus Size 13" 4 Pkt. Short  
Fabrication: Stretch Twill  
Rise: Lowrise  
Fit: Slim  
Size: 16-22



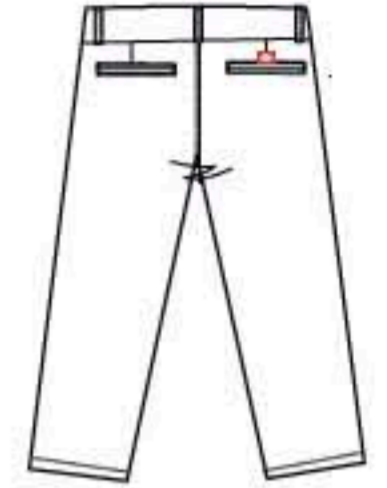
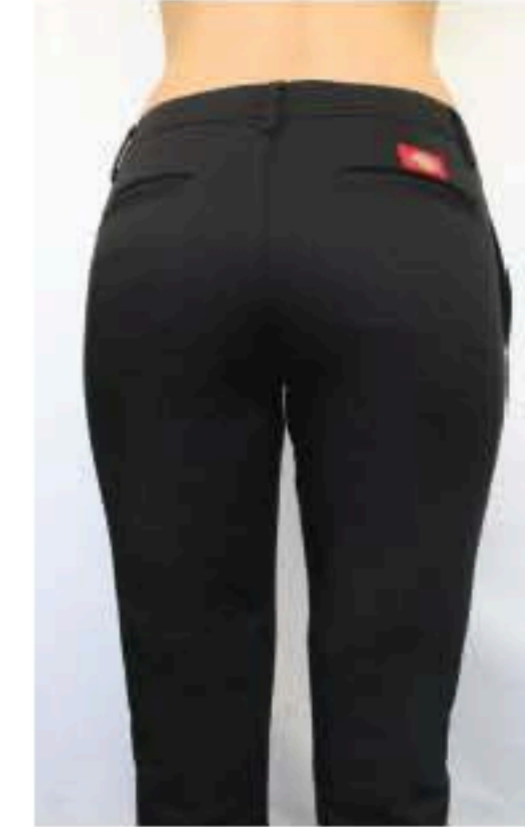
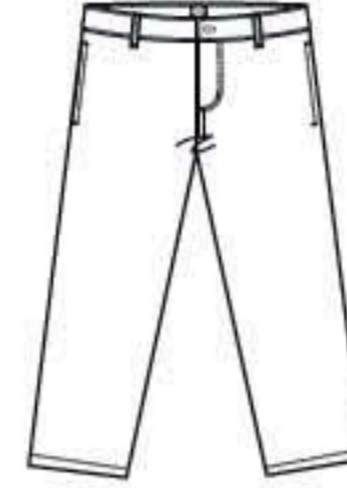
# HH341

Description: College Short  
Fabrication: Stretch Twill  
Rise: Highrise  
Fit: Slim  
Size: 0-15



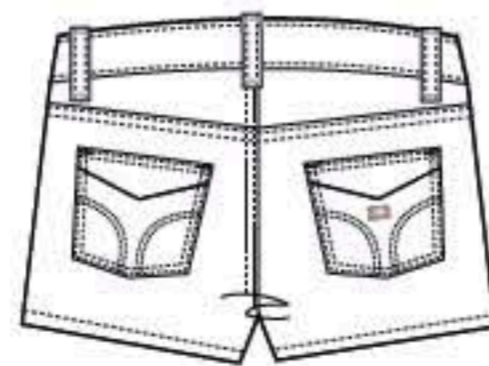
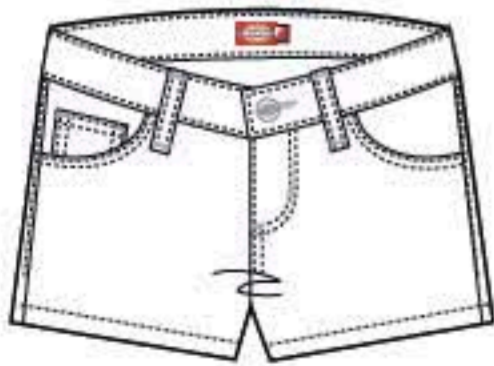
# HH875

Description: 23" 4 Pkt. Capri  
Fabrication: Stretch Twill  
Rise: Midrise  
Fit: Slim  
Size: 0-15



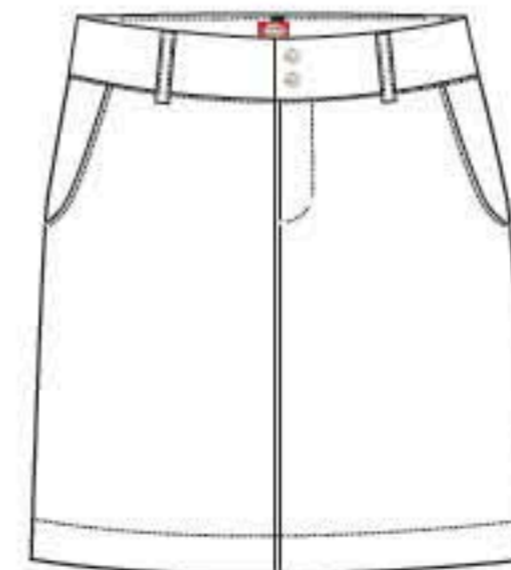
# HH333

Description: 3" 5 Pkt. Short  
Fabrication: Stretch Twill  
Rise: Lowrise  
Fit: Slim  
Size: 0-15



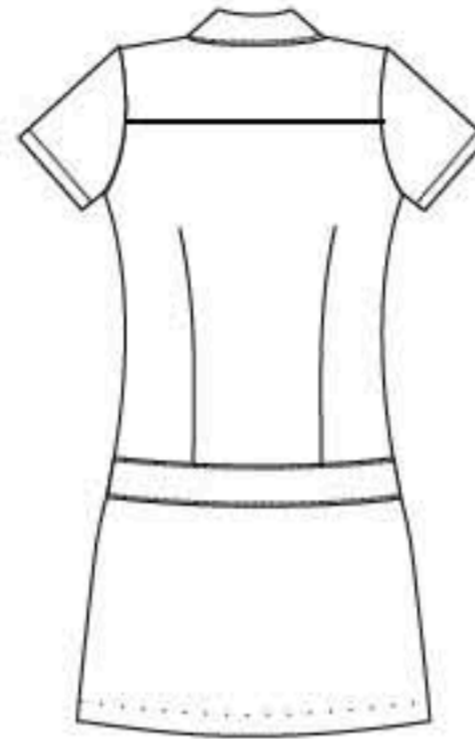
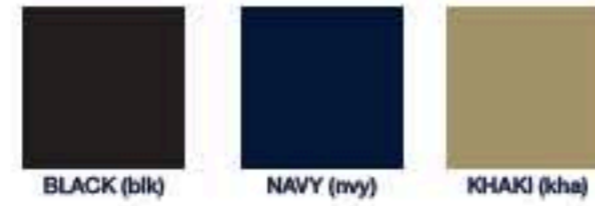
# HH314

Description: 18" Uni- Skirt  
Fabrication: Stretch Twill  
Rise: Relaxed  
Size: 0-15



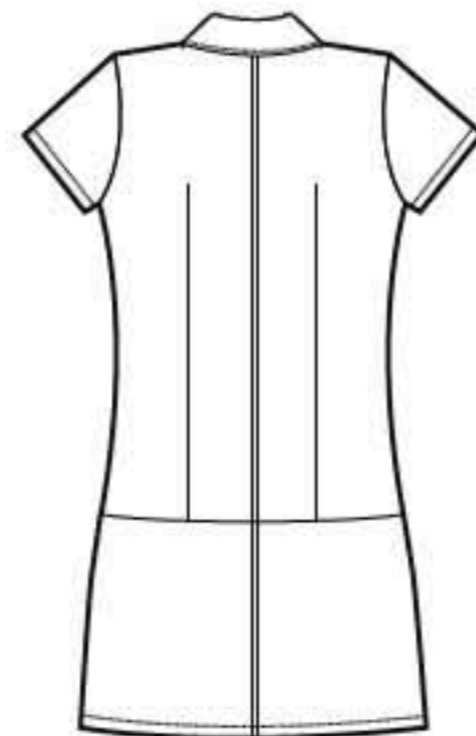
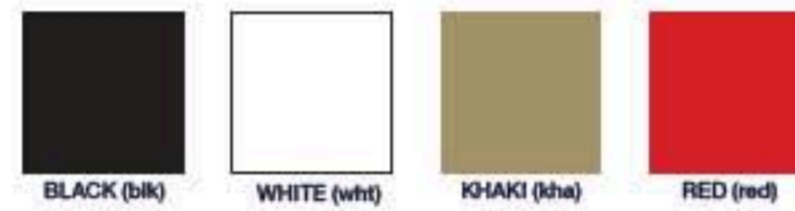
# PL603

Description: Betty Ford Dress  
Fabrication: Stretch Poplin  
Rise:  
Fit: Slim  
Size: S-XL



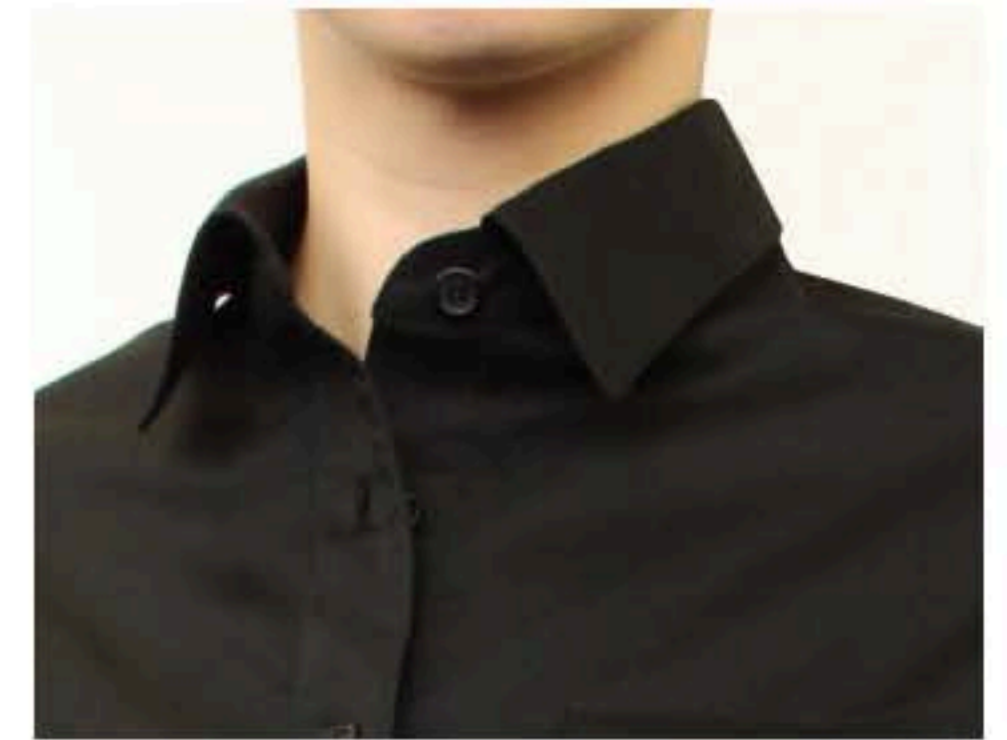
# 107GN

Description: Annie Zipper Dress  
Fabrication: Stretch Twill  
Rise:  
Fit: Slim  
Size: S-XL



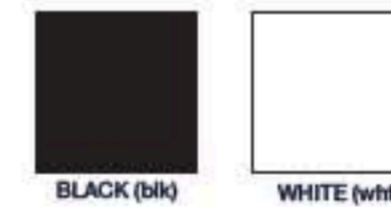
# PL413

Description: S/S Button Down Shirt  
Fabrication: Stretch Poplin  
Rise:  
Fit: Slim  
Size: S-XL



# PL413GL

Description: Plus Size S/S Buttoned Down Shirt  
Fabrication: Stretch Poplin  
Rise:  
Fit: Slim  
Size: 1x-4x



PL413GL

# PL412

Description: L/S Buttoned Down Shirt  
Fabrication: Stretch Poplin  
Rise:  
Fit: Slim  
Size: S-XL

