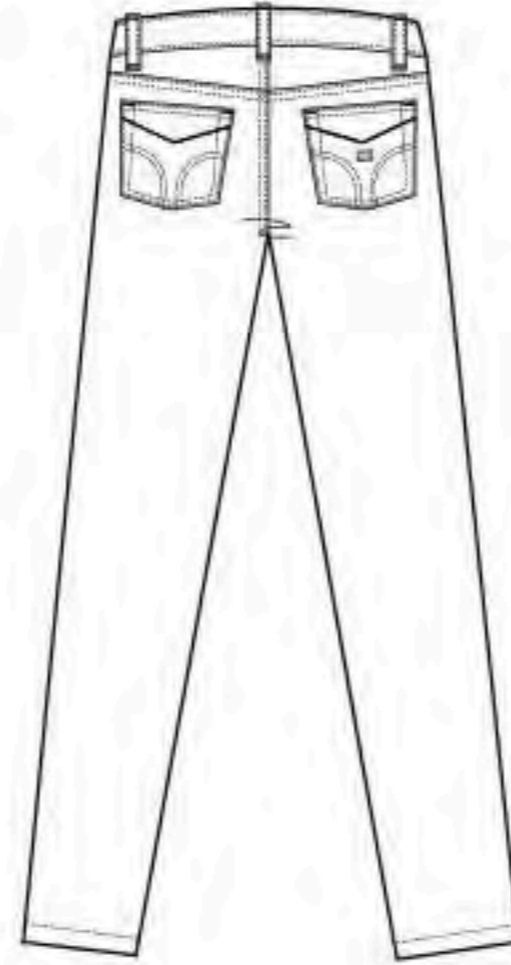
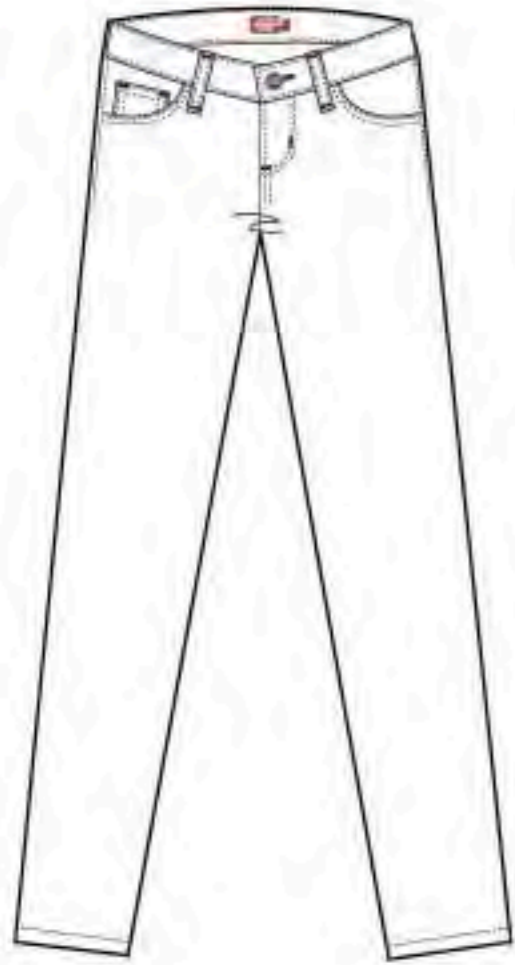




APPAREL LIMITED INC. EXCLUSIVE LICENSEE OF DICKIES GIRL
WWW.DICKIESGIRL.COM 877.748.1988



5 Pocket



HH164

Description: 5 Pkt. Skinny Pant

Fabrication: **Stretch Twill**

Rise: Lowrise

Fit: Slim

Size: 0-15



164JST

Description: 5 Pkt. Skinny Pant

Fabrication: **Stretch Sateen**

Rise: Lowrise

Fit: Slim

Size: 0-15



164JCDSK

Description: 5 Pkt. Skinny Pant

Fabrication: **Stretch Corduroy**

Rise: Lowrise

Fit: Slim

Size: 0-15



164PNT

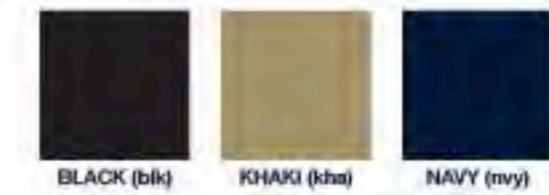
Description: Mock 5 Pkt. Skinny Legging

Fabrication: **Stretch Ponte**

Rise: Lowrise

Fit: Slim

Size: 0-15



HH166

Description: 5 Pkt. Straight Leg Pant

Fabrication: **Stretch Twill**

Rise: Lowrise

Fit: Slim

Size: 0-15



HH014CV

Description: *Curvy* 5 Pkt. Skinny Pant

Fabrication: **Stretch Twill**

Rise: Midrise

Fit: Slim

Size: 0-15



HH164GL

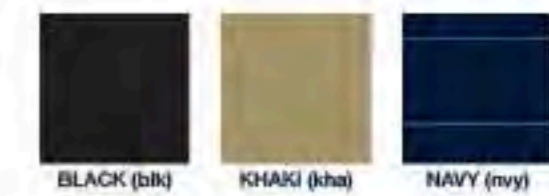
Description: Plus Size 5 Pkt. Skinny Pant

Fabrication: **Stretch Twill**

Rise: Midrise

Fit: Slim

Size: 16-22



The Worker



N882

Description: The Worker 2 Pkt. Bootcut Pant
Fabrication: **Stretch Twill**
Rise: Midrise
Fit: Slim
Size: 0-15
(Size 17 offered in blk, kha, nvy)



882JPRBT

Description: The Worker 2 Pkt. Bootcut Pant
Fabrication: **Poly Rayon**
Rise: Midrise
Fit: Slim
Size: 0-15



HH013CV

Description: *Curvy* 2 Pkt. Bootcut Pant
Fabrication: **Stretch Twill**
Rise: Midrise
Fit: Slim
Size: 0-15



N882GL

Description: **Plus Size** 2 Pkt. Bootcut Pant
Fabrication: **Stretch Twill**
Rise: Midrise
Fit: Slim
Size: 16-22



HH874SK

Description: 4 Pkt. Skinny Pant
Fabrication: **Stretch Twill**
Rise: Midrise
Fit: Slim
Size: 0-15



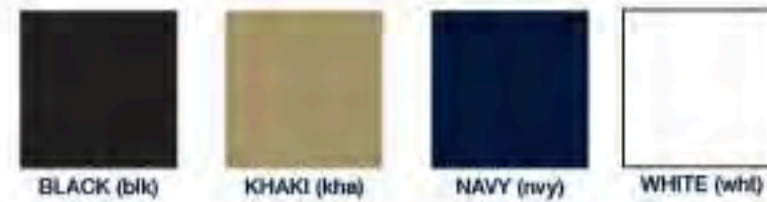
874JCDISK

Description: 4 Pkt. Skinny Pant
Fabrication: **Stretch Corduroy**
Rise: Midrise
Fit: Slim
Size: 0-15



HH874ST

Description: 4 Pkt. Straight Leg Pant
Fabrication: **Stretch Twill**
Rise: Midrise
Fit: Slim
Size: 0-15



HH874STCV

Description: *Curvy* 4 Pkt. Straight Leg Pant
Fabrication: **Stretch Twill**
Rise: Midrise
Fit: Slim
Size: 0-15



HH874STGL

Description: Plus Size 4 Pkt. Straight Leg Pant
Fabrication: **Stretch Twill**
Rise: Midrise
Fit: Slim
Size: 16-22



4 Pocket Chino





NHH1011

Description: Bull 4 Pkt. Bootcut Pant

Fabrication: **Stretch Twill**

Rise: Midrise

Fit: Relaxed

Size: 0-15



TR1011

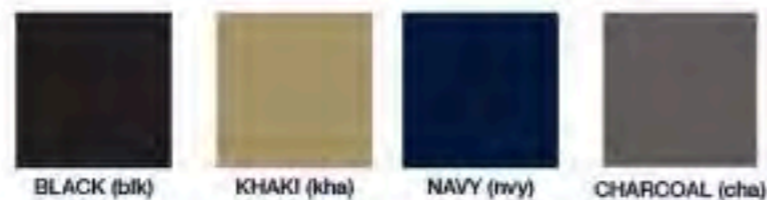
Description: Broker 4 Pkt. Bootcut Pant

Fabrication: **Poly Rayon**

Rise: Midrise

Fit: Relaxed

Size: 0-15



HH201

Description: College 4 Pkt. Bootcut Pant

Fabrication: **Stretch Twill**

Rise: Highrise

Fit: Slim

Size: 0-15



HH201GL

Description: Plus Size College 4 Pkt. Bootcut Pant

Fabrication: **Stretch Twill**

Rise: Highrise

Fit: Slim

Size: 16-22



1HH

Description: Simple No Pkt. Straight Leg Pant
Fabrication: **Stretch Twill**
Rise: Midrise
Fit: Slim
Size: 0-15



TR1431

Description: Agent 4 Pkt. Straight Leg Pant
Fabrication: **Poly Rayon**
Rise: Midrise
Fit: Slim
Size: 0-15



1523JHHST

Description: 30" Inseam 3 Pkt. Straight Leg Pant
Fabrication: **Stretch Twill**
Rise: Midrise
Fit: Relaxed
Size: 0-15



TR1432

Description: Agent 4 Pkt Straight Leg Crop Pant
Fabrication: **Poly Rayon**
Rise: Midrise
Fit: Slim
Size: 0-15





HH876

Description: 13" 4 Pkt. Short

Fabrication: **Stretch Twill**

Rise: Midrise

Fit: Slim

Size: 0-15



HH876GL

Description: Plus Size 13" 4 Pkt. Short

Fabrication: **Stretch Twill**

Rise: Midrise

Fit: Slim

Size: 16-22



NHH6016

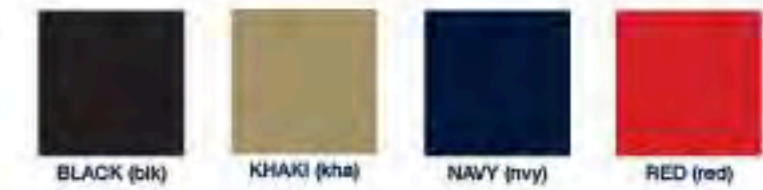
Description: 5" 4 Pkt. Short

Fabrication: **Stretch Twill**

Rise: Midrise

Fit: Slim

Size: 0-15



NHH6012

Description: 8" 4 Pkt. Short

Fabrication: **Stretch Twill**

Rise: Midrise

Fit: Slim

Size: 0-15



NHH6011

Description: 13" 4 Pkt. Short

Fabrication: **Stretch Twill**

Rise: Midrise

Fit: Relaxed

Size: 0-15





HH341

Description: 9" College 4 Pkt. Short

Fabrication: **Stretch Twill**

Rise: Highrise

Fit: Slim

Size: 0-15



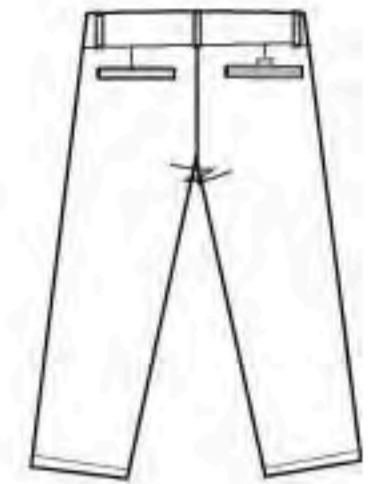
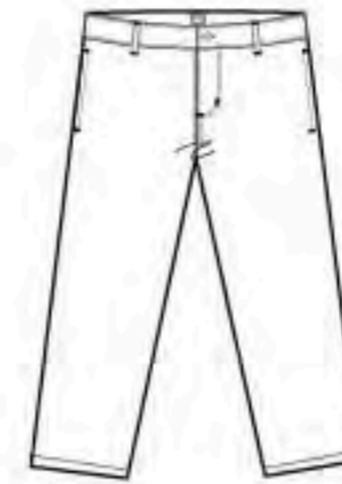
BLACK (blk)



KHAKI (kha)



NAVY (nvy)



HH875

Description: 23" 4 Pkt. Capri

Fabrication: **Stretch Twill**

Rise: Midrise

Fit: Slim

Size: 0-15



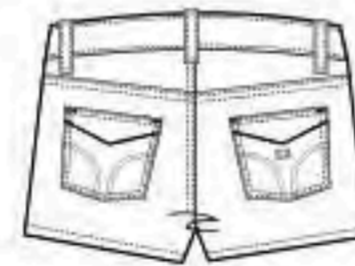
BLACK (blk)



KHAKI (kha)



NAVY (nvy)



HH333

Description: 3" 5 Pkt. Short

Fabrication: **Stretch Twill**

Rise: Lowrise

Fit: Slim

Size: 0-15



BLACK (blk)



KHAKI (kha)



NAVY (nvy)



HH314

Description: 18" 4 Pkt. Skirt

Fabrication: **Stretch Twill**

Fit: Relaxed

Size: 0-15



BLACK (blk)



KHAKI (kha)



NAVY (nvy)



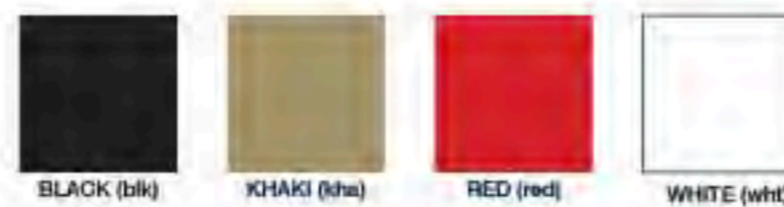
PL603

Description: "Betty Ford Dress"
Fabrication: Stretch Poplin
Fit: Slim
Size: S-XL



107GN

Description: "Annie Zipper Dress"
Fabrication: Stretch Twill
Fit: Slim
Size: S-XL



PL413

Description: S/S Button Down Shirt
Fabrication: Stretch Poplin
Fit: Slim
Size: S-XL



PL413GL

Description: Plus Size S/S Buttoned Down Shirt
Fabrication: Stretch Poplin
Fit: Slim
Size: 1x-4x



PL412

Description: L/S Buttoned Down Shirt
Fabrication: Stretch Poplin
Fit: Slim
Size: S-XL



PQ924L

Description: S/S 2 Button Polo Shirt
 Fabrication: Stretch Pique
 Fit: Slim
 Size: S-XL



JR936

Description: S/S 5 Button Jersey Polo
 Fabrication: *Cotton Jersey*
 Fit: Slim
 Size: S-XL



PQ924LGL

Description: Plus Size S/S 2 Button Polo Shirt
 Fabrication: Stretch Pique
 Fit: Slim
 Size: 1X-4X



JR830

Description: S/S V-Neck Tee
 Fabrication: *Cotton Jersey*
 Fit: Slim
 Size: S-XL



JR831

Description: S/S Crew Neck Tee
 Fabrication: *Cotton Jersey*
 Fit: Slim
 Size: S-XL



SF513

Description: Zip Front Hoodie Jacket

Fabrication: Stretch French Terry

Fit: Slim

Size: S-XL



U.S. SALES REPS

ROB KOENIG & KRISTI WILSON
TEXAS, ARKANSAS, OKLAHOMA, MISSISSIPPI,
LOUISIANA, KANSAS, MISSOURI

512.970.7829/ 512.970.1364
rob@cincokings.com
kristi@cincokings.com

ROB BIMSON
CA: FRESNO COUNTY, NO. CALIFORNIA, NO. NEVADA/
KING CO./ TULARE CO.

916.214.4100
rbimson@sbcglobal.net

STEVE YINGER
CA: ORANGE COUNTY, SAN DIEGO, ARIZONA

858.752.7212
steve@pfsandiego.com

RANDY CRANE
COLORADO, UTAH, WYOMING, MONTANA, SO. IDAHO

720.581.4704
rcsales4u@aol.com

MELISSA PARRY- ALONSO (MISSY)
CA: LOS ANGELES, SANTA BARBARA, SAN BERNADINO,
BAKERSFIELD, KERN CO., RIVERSIDE CO.,
SO. NEVADA, NEW MEXICO, VENTURA CO.

714.552.7202
shoegirlmissy@gmail.com

OCTAVIO GOMEZ
BAJA CA.

011.52.1.664.622.1966
octaviogomez8@hotmail.com

HEIDI GRIMSLEY
HAWAII, ALASKA, OREGON, WASHINGTON STATE, NO. IDAHO

206.660.6871
hlgrimsley@comcast.net

ROLANDO HIDALGO
FLORIDA, PUERTO RICO, US VIRGIN ISLANDS

305.599.8717 / 954.629.1553
rolando@hidalgokid.com

JIM LUMMIS
ILLINOIS, WISCONSIN, MINNESOTA, NO. & SO. DAKOTA,
MICHIGAN, OHIO, INDIANA, IOWA, NEBRASKA

734.323.8078
lshuguy@aol.com

HOWARD SWIRSKY
DELAWARE, MARYLAND, SO. NEW JERSEY, PENNSYLVANIA,
WASHINGTON DC, VA-SUBURBAN DC, NYC, ALL BOROUGHES
LONG ISLAND

631.764.9662
hswirsky@optonline.net

JANE D. DAVIS
NEW YORK (STATE), MAINE, NEW HAMPSHIRE, VERMONT,
MASSACHUSETTS, RHODE ISLAND, CONNECTICUT

207.522.9149
landncsales@gwi.net

BETH FAIRBAUGH
NO. & SO. CAROLINA, ALABAMA, TENNESSEE,
GEORGIA, VIRGINIA, W. VIRGINIA, KENTUCKY

704.562.7767
bfairbaugh@yahoo.com

SAMY LEVY
EASTERN REGION SALES DIRECTOR

323.859.2430 x204
samy@apparellimited.com

SEPAND TOFFER
WESTERN REGION SALES DIRECTOR

323.859.2430 x287
sepand@apparellimited.com



3011 E. Pico Blvd. Los Angeles, Ca 90023 • www.dickiesgirl.com
TEL: (877) 746-1388 FAX: (323) 859-2449 info@apparellimited.com